

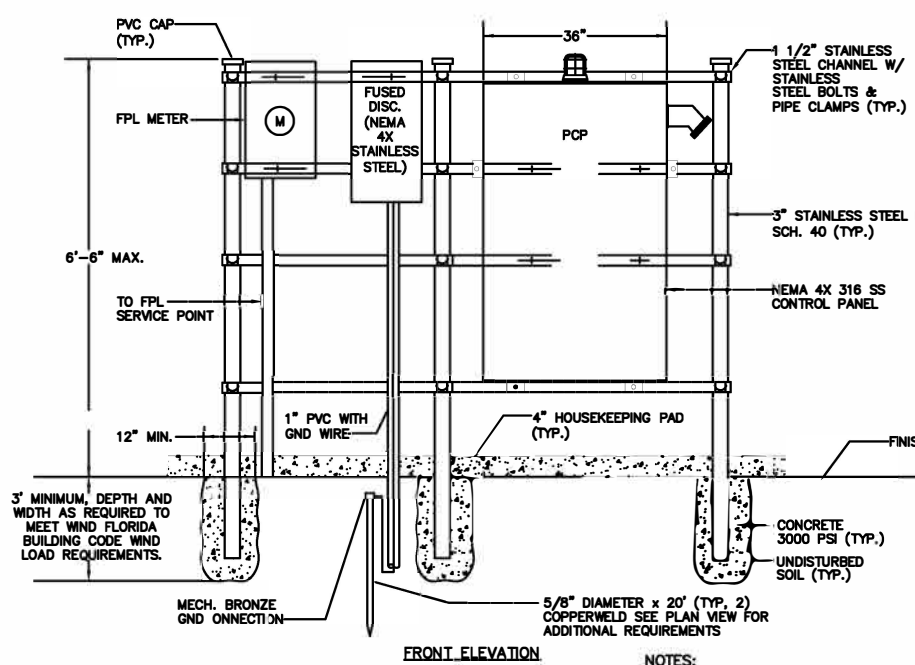


DATE: 08/24

DRAWN: KHA

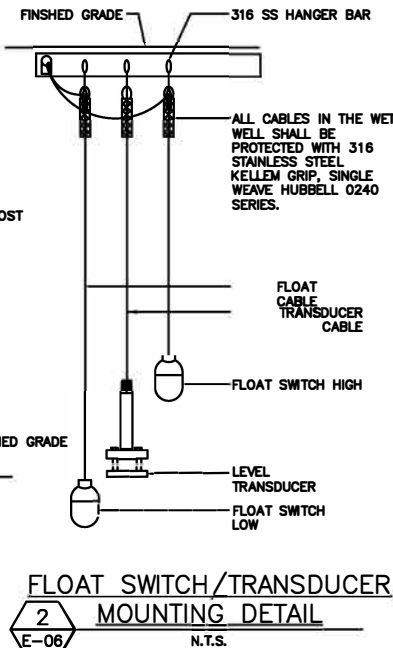
ELECTRICAL DETAILS 1

E-6



NOTES:

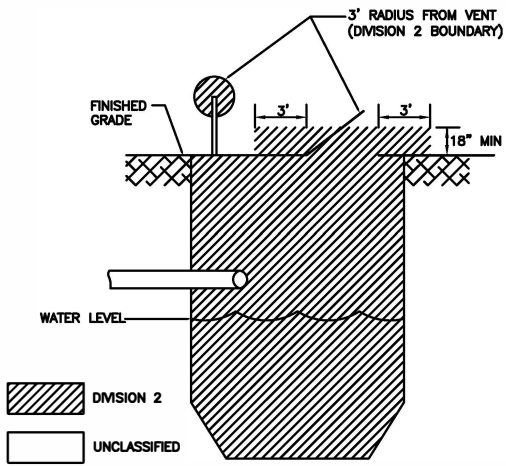
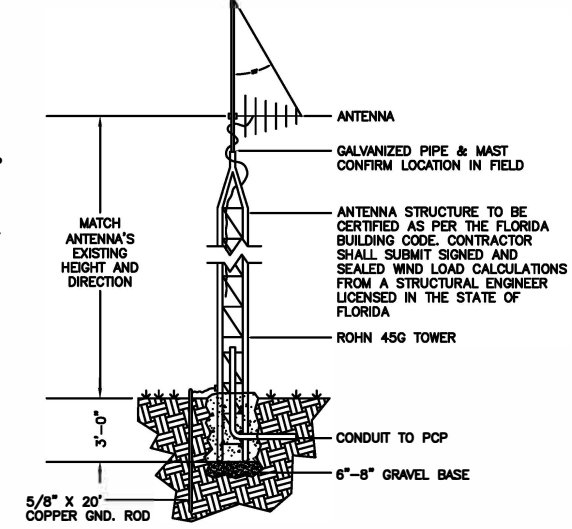
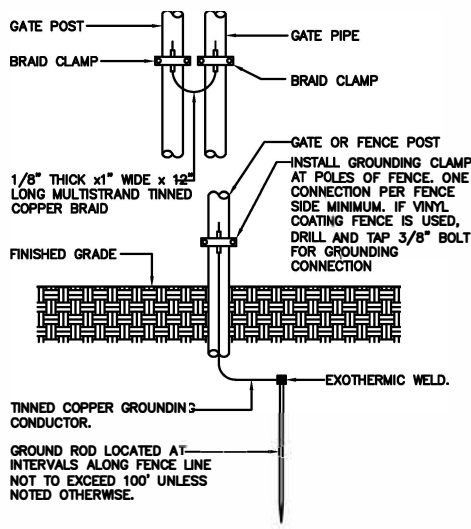
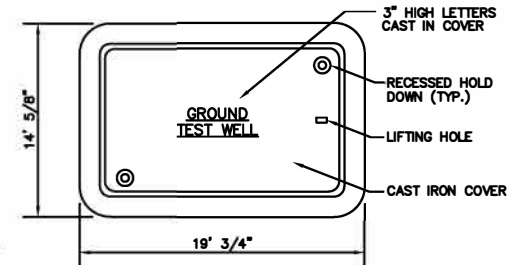
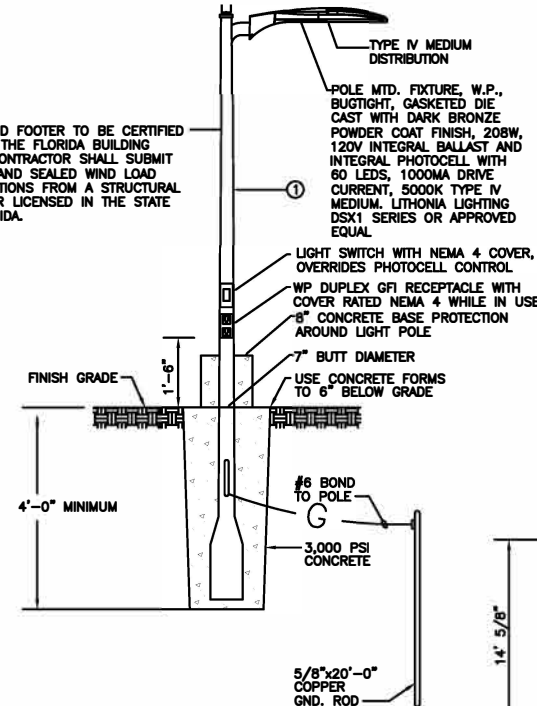
- 1 ALL MOUNTING HARDWARE SHALL BE OF 316 STAINLESS STEEL, UNLESS OTHERWISE NOTED.
- 2 CONTRACTOR SHALL SUBMIT SIGNED AND SEALED WIND LOAD CALCULATION FROM A STRUCTURAL ENGINEER LICENSED IN THE STATE OF FLORIDA. ELECTRICAL EQUIPMENT SERVICE RACK TO BE CERTIFIED PER FLORIDA BUILDING CODE.



NOTES:

- 1 12 FOOT ROUND TAPERED ALUMINUM POLE, ALLOY 6063-T6 HAPCO RTA SERIES, NO EQUAL. CONTRACTOR TO PROVIDE STRUCTURAL POLE AND FOOTING DETAILED DRAWINGS INCLUDING WIND LOAD CALCULATIONS SIGNED AND SEALED BY A STATE OF FLORIDA STRUCTURAL ENGINEER. CALCULATIONS SHALL BE IN ACCORDANCE WITH THE FLORIDA BUILDING CODE.

3 TYPE 'A' POLE MOUNTED FIXTURE DETAIL
E-06 N.T.S.



NOTES:

- 1 THE AREA INSIDE THE WET WELL IS A HAZARDOUS, CLASS 1, DIV. 2 LOCATION.
- 2 THE AREA WITHIN 3 FEET FROM THIS HATCH AND 1.5 FEET ABOVE THE WET WELL SLAB IS A HAZARDOUS, CLASS 1, DIV. 2 LOCATION.
- 3 THE AREA WITHIN A 3 FOOT RADIUS FROM THE VENT OPENING IS A HAZARDOUS, CLASS 1, DIV. 2E LOCATION. THE AREA WITHIN A 5 FOOT RADIUS FROM THE VENT OPENING IS A HAZARDOUS, CLASS 1, DIV. 2 LOCATION.
- 4 THE AREA INSIDE THE VALVE VAULT IS A HAZARDOUS, CLASS 1, DIV. 2 LOCATION.
- 5 PROVIDE WIRING METHODS AND MATERIALS SUITABLE FOR A CLASS 1, DIVISION 2 AREA WITHIN ALL HAZARDOUS AREAS. USE CROUSE-HINDS MODEL EYSR RETROFIT SEALING FITTING.

