



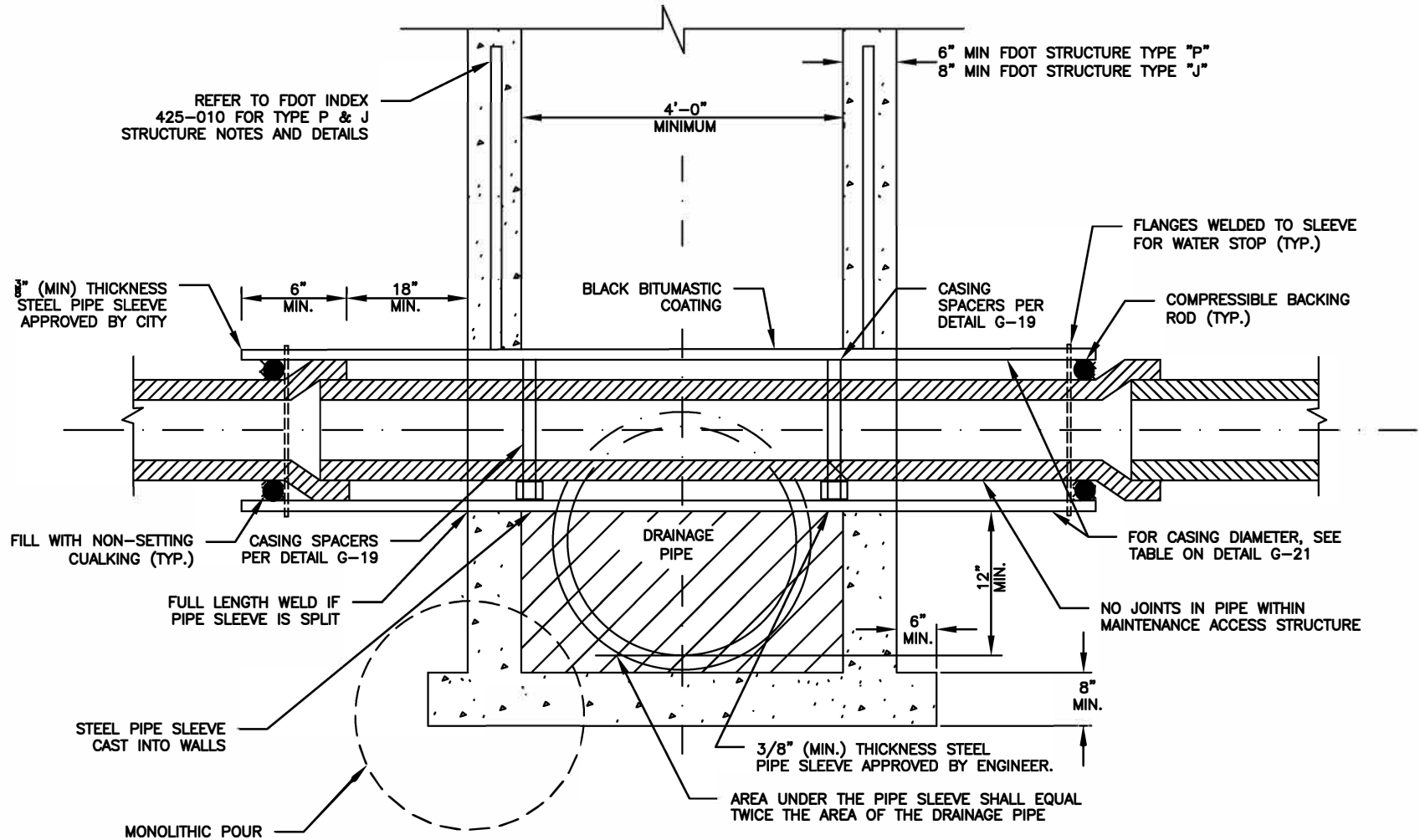
CITY OF MARGATE, FLORIDA
DEPARTMENT OF ENVIRONMENTAL
AND ENGINEERING SERVICES

DATE: 08/24

DRAWN: KHA

CONFLICT MAINTENANCE ACCESS STRUCTURE

G-7



NOTE:

1. ALL CONFLICT MAINTENANCE ACCESS STRUCTURES SHALL CONFORM TO THE DETAILS SHOWN ON THIS DRAWING AND TO THE REQUIREMENTS OF ASTM C-478.
2. POTABLE WATER PIPE SHALL NOT PASS THROUGH OR CONTACT STORM DRAINAGE MAINTENANCE ACCESS STRUCTURE WITHOUT WRITTEN PERMISSION BY THE CITY.
3. POTABLE WATER PIPE SHALL NOT PASS THROUGH OR CONTACT SANITARY SEWER MAINTENANCE ACCESS STRUCTURE.
4. MINIMUM TWO (2) FOOT CLEARANCE REQUIRED BETWEEN OUTSIDE OF SLEEVE AND PARALLEL WALL.
5. CONFLICT STRUCTURE TO COMPLY WITH REQUIREMENTS OF CHAPTER 62-555.314 (FAC).
6. PIPE AND SLEEVE TO BE OF DISSIMILAR MATERIAL.